



Planner | DIN A5 | portrait | Cover- single-sided printing

Final Closed Format:

148 × 210 mm

Final Open Format:

311 × 210 mm

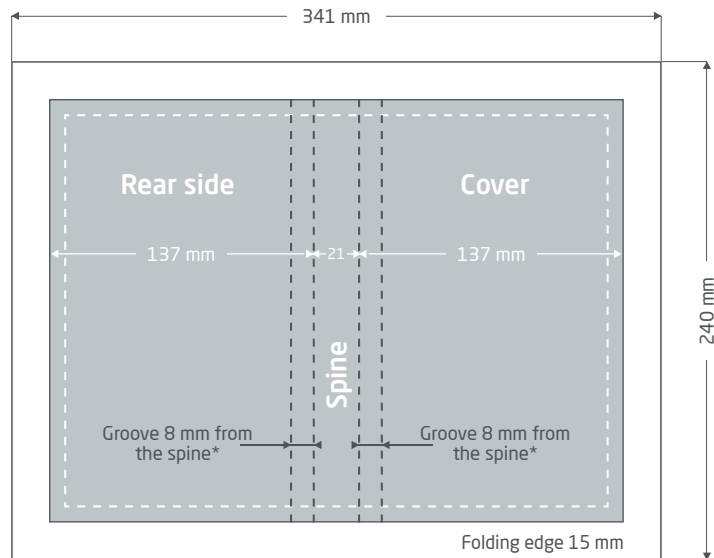
Document format to deliver incl.

TrimBox:

341 × 240 mm

General information:

- Scope: 352 pages
- Hard cover with padded book cover, matt or gloss lamination
- Corner perforation
- Bookmark
- Headband
- Round spine
- Cover colour: 4/0 colour
- Content colour: 2/2 colour anthracite/red (HKS 92 + HKS 14)
- Cover material: matt or glossy image print 150 g/m²
- Content material: Offset 70 g/m²
- Please provide one 1-page PDF in 341 × 240 mm format (book cover)
- See page 3 + 4 of the PDF for details on the calendar



Cover, exterior (PDF page 1)

Bleed margin: 15 mm

Elements that extend to the edge of the page require a bleed margin. This area is folded to the inside and is largely covered by the front or back endpaper.

 **Final Format:** Size of the finished product

Safety clearance: min. 5 mm

Due to manufacturing tolerances, important text and image elements should have a safety clearance from the edges of the final format.

--- **Groove: 8 mm from the spine**

*See next page for information on the groove.

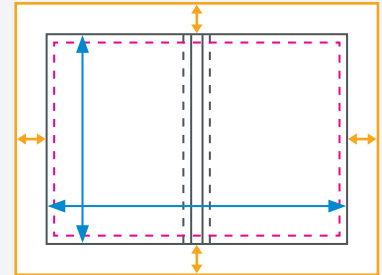
Product-specific data preparation » Planner

Notes for designing the cover

Adhesion

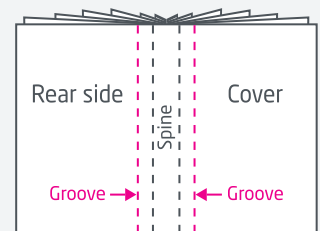
Please note that the outer 15 mm of the cover will subsequently be wrapped around the front and rear cover panel of the book and pasted over by the front and back end-paper. Afterwards, this area will no longer be visible. As a result, important design elements should never extend past the safety (- - -) margin.

- ↔ Width/height of the actual final format of planner: 311 × 210 mm
- ↔ Width/height of adhesion: 15 mm all-around



Groove

The groove is placed on both sides of the spine 8 mm away from the same.



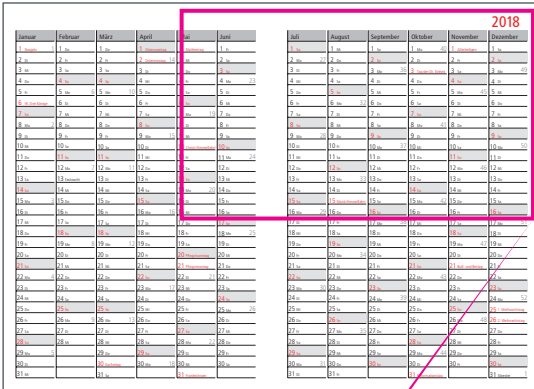
✓ Format adjustment

Please always follow the instructions in the test report. If you provide an incorrect page format, incorrect TrimBox or incorrect page orientation, we will place your data centred and unscaled in the ordered page format and inform you before you authorise the printing.

✓ Papers/paint used

When using different types of paper for the cover and interior or when painting the cover, it can affect the printed product in the case of images/graphics that span pages.

View of the calendar design » Planner



June	July	August	September	October	November	December
1. So	1. So	1. So	1. So	1. So	1. So	1. So
2. Mo	2. Mo	2. Mo	2. Mo	2. Mo	2. Mo	2. Mo
3. Di	3. Di	3. Di	3. Di	3. Di	3. Di	3. Di
4. Mi	4. Mi	4. Mi	4. Mi	4. Mi	4. Mi	4. Mi
5. Do	5. Do	5. Do	5. Do	5. Do	5. Do	5. Do
6. Fr	6. Fr	6. Fr	6. Fr	6. Fr	6. Fr	6. Fr
7. Sa	7. Sa	7. Sa	7. Sa	7. Sa	7. Sa	7. Sa
8. So	8. So	8. So	8. So	8. So	8. So	8. So
9. Mo	9. Mo	9. Mo	9. Mo	9. Mo	9. Mo	9. Mo
10. Di	10. Di	10. Di	10. Di	10. Di	10. Di	10. Di
11. Mi	11. Mi	11. Mi	11. Mi	11. Mi	11. Mi	11. Mi
12. Do	12. Do	12. Do	12. Do	12. Do	12. Do	12. Do
13. Fr	13. Fr	13. Fr	13. Fr	13. Fr	13. Fr	13. Fr
14. Sa	14. Sa	14. Sa	14. Sa	14. Sa	14. Sa	14. Sa
15. So	15. So	15. So	15. So	15. So	15. So	15. So
16. Mo	16. Mo	16. Mo	16. Mo	16. Mo	16. Mo	16. Mo
17. Di	17. Di	17. Di	17. Di	17. Di	17. Di	17. Di
18. Mi	18. Mi	18. Mi	18. Mi	18. Mi	18. Mi	18. Mi
19. Do	19. Do	19. Do	19. Do	19. Do	19. Do	19. Do
20. Fr	20. Fr	20. Fr	20. Fr	20. Fr	20. Fr	20. Fr
21. Sa	21. Sa	21. Sa	21. Sa	21. Sa	21. Sa	21. Sa
22. So	22. So	22. So	22. So	22. So	22. So	22. So
23. Mo	23. Mo	23. Mo	23. Mo	23. Mo	23. Mo	23. Mo
24. Di	24. Di	24. Di	24. Di	24. Di	24. Di	24. Di
25. Mi	25. Mi	25. Mi	25. Mi	25. Mi	25. Mi	25. Mi
26. Do	26. Do	26. Do	26. Do	26. Do	26. Do	26. Do
27. Fr	27. Fr	27. Fr	27. Fr	27. Fr	27. Fr	27. Fr
28. Sa	28. Sa	28. Sa	28. Sa	28. Sa	28. Sa	28. Sa
29. So	29. So	29. So	29. So	29. So	29. So	29. So
30. Mo	30. Mo	30. Mo	30. Mo	30. Mo	30. Mo	30. Mo
31. Di	31. Di	31. Di	31. Di	31. Di	31. Di	31. Di

Annual overview view

- German calendar, 3-language D/GB/F
- One day each on one page
- Saturday and Sunday summarized
- Half-hour division from 7:00 - 22:00
- Label for German holidays
- Label for national holidays for A/B/CH/D/GB/E/F/I/NL
- Colour: Anthracite (HKS 92), Sundays/holidays red (HKS 14)
- Calendar covers December of the preceding year to January of the following year
- Annual overview of the previous, current, and following year
- Overview of international holidays of the previous and current year
- Overview of holiday dates for D/A of the previous and current year
- Address section for entering contact information
- Corner perforation on every page
- includes colourful D/A/CH road map on back endpaper

View at 100%

		2018					
ai	Juni	Juli	August	September	Oktober	November	Dezember
Mai feiertag	1 Fr	1 So	1 Mi	1 Sa	1 Mo 40	1 Allerheiligen	1 Sa
Mi	2 Sa	2 Mo 27	2 Do	2 So	2 Di	2 Fr	2 So
Do	3 So	3 Di	3 Fr	3 Mo 36	3 Tag der Dt. Einheit	3 Sa	3 Mo 49
Fr	4 Mo 23	4 Mi	4 Sa	4 Di	4 Do	4 So	4 Di
Sa	5 Di	5 Do	5 So	5 Mi	5 Fr	5 Mo 45	5 Mi
So	6 Mi	6 Fr	6 Mo 32	6 Do	6 Sa	6 Di	6 Do
Mo 19	7 Do	7 Sa	7 Di	7 Fr	7 So	7 Mi	7 Fr
Di	8 Fr	8 So	8 Mi	8 Sa	8 Mo 41	8 Do	8 Sa
Mi	9 Sa	9 Mo 28	9 Do	9 So	9 Di	9 Fr	9 So
Christi Himmelfahrt	10 So	10 Di	10 Fr	10 Mo 37	10 Mi	10 Sa	10 Mo 50
Fr	11 Mo 24	11 Mi	11 Sa	11 Di	11 Do	11 So	11 Di
Sa	12 Di	12 Do	12 So	12 Mi	12 Fr	12 Mo 46	12 Mi
So	13 Mi	13 Fr	13 Mo 33	13 Do	13 Sa	13 Di	13 Do
Mo 20	14 Do	14 Sa	14 Di	14 Fr	14 So	14 Mi	14 Fr
Di	15 Fr	15 So	15 Mariä Himmelfahrt	15 Sa	15 Mo 42	15 Do	15 Sa
Mi	16 Sa	16 Mo 29	16 Do	16 So	16 Di	16 Fr	16 So

Guide on preparing print data

In order to achieve an optimal print result, please consider the following items when creating your print data:

File format

Please send us a PDF or JPG file that is ready to print. We recommend that you create a PDF file according to the PDF/X-1a, PDF/X-3 or, preferably, the PDF/X-4 standard.

Colour space and ink coverage

All elements of the document should be created in CMYK mode. We will automatically convert data created in another colour mode (e.g. RGB, LAB, spot colours) to CMYK. We do not assume any liability for resulting colour deviations or non-display of objects, especially in connection with transparencies or unknown special colours. Furthermore, please provide your print data with the corresponding ICC profiles for standardised offset printing. For coated papers use the colour profile "PSOcoated_v3.icc" and for uncoated papers the profile "PSOuncoated_v3_FOGRA52.icc".

Please create grey areas and black texts exclusively in the black channel. Objects with a total colour application of over 320%, exceeding the limit for printing, will be reduced to this 320% total colour application for production reasons.

Resolution of images and graphics

Generally, we recommend a resolution of at least 250 ppi (dpi), and at least 1,200 ppi (dpi) for line art.

Page format, page alignment, and page bleed

Please make the page format and page orientation equal for all sides and according to your desired print job. Elements that extend to the edge require a bleed margin. Furthermore, we recommend that you maintain a safety clearance at the edge of your document by not placing any text or important elements due to possible manufacturing tolerances. If the page format or page orientation in your print data differs from the requirements listed herein, we will place your template centred and unscaled in the ordered page format and we will notify you thereof before you give the approval for printing. We cannot accept any liability for resulting complaints.

Fonts

Please embed all the fonts that you use in your print file. We will not replace missing fonts. For optimum readability, we recommend a minimum font size of 5 points.

Lines

The line weight of graphics and text outlines should be at least 0.2 pt. We automatically thicken excessively thin lines to this minimum printable size. Please note that this can also cause lines created with 0 pt to become visible or thicken text outlines that are too narrow.

Overprinting, non-printing elements and layers

Please remove all non-printing elements from your document. PDF files should not contain any layers. Check if the overprinting settings are correct.

Format adjustment

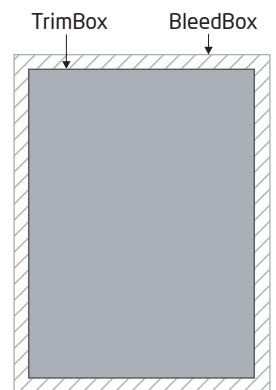
During the ordering process and as part of the selected data check, we check your print data to see if the page format of your print data matches that of the ordered product, among other things. Only the "TrimBox" is important in this case. You can freely define the size of the possible BleedBoxes according to your needs.

Final Format (TrimBox):

The TrimBox describes the trimmed final format of a page.

BleedBox:

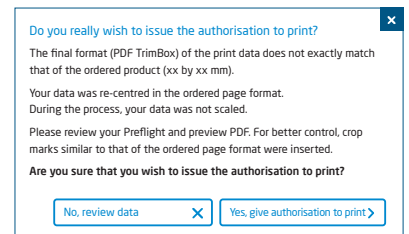
The BleedBox defines the bleed of a page. With a bleed of 3 mm, the BleedBox will be 3 mm larger all around than the final format.




You can check the TrimBox of your PDF file using the **Adobe Acrobat Reader** and **Adobe Acrobat** programs. Unlike Acrobat, Adobe Reader has very limited functionality. For instance, you cannot alter PDF documents with Adobe Reader. You must use Acrobat to do so.

You can display the TrimBox or final format in both programs as follows: Open the "Presets" in the menu and from there, activate "Page display" >> "Page contents and information", activate the "Show art, final format, and BleedBox" menu item. Afterwards, the TrimBox will be displayed with a red border and the BleedBox with a blue border in the corresponding PDF file.

If there are discrepancies between the page formats of the ordered product and their print data, we adjust the format. In other words, we place your data centrally and unscaled in the ordered page format and notify you both in the test report of the data check and in a separate window before the order is completed.



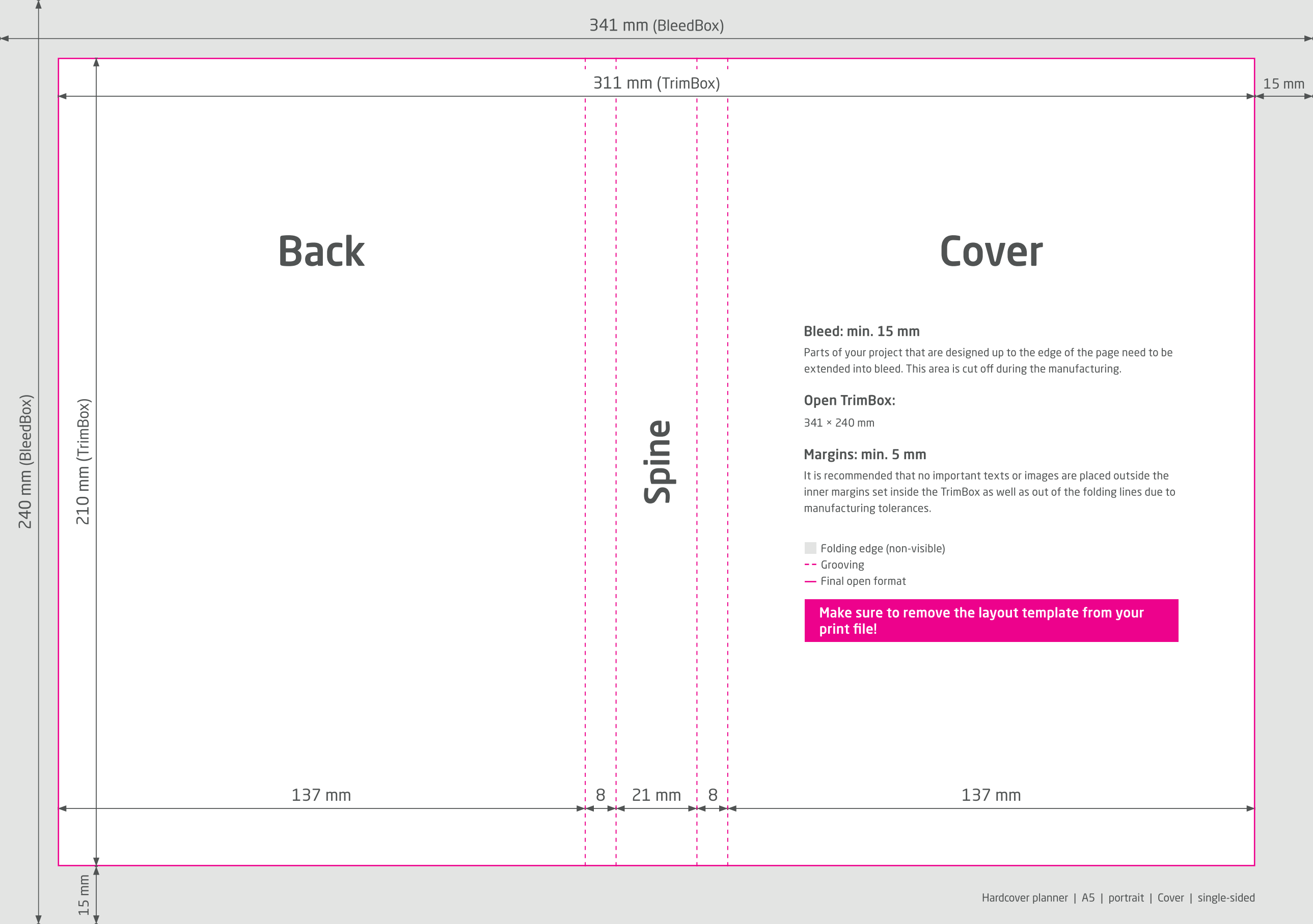
my_printfile.pdf

 Print data check successfully completed with messages ([Preview](#) / [Test report](#))

In our prepared, low-resolution preview file, you can check the status of your file. If the format is adjusted, we always add crop marks for you in this preview.



We do not check the contents of your data at all. The print data is checked automatically. Please make sure that you always adhere to the instructions of the data check print area in the online website. We recommend that you use "advanced data check". We assume no responsibility for problems arising due to failure to adhere to this data sheet and the data handling guidelines on our website!



341 mm (BleedBox)

311 mm (TrimBox)

15 mm

Back

Cover

Spine

Bleed: min. 15 mm

Parts of your project that are designed up to the edge of the page need to be extended into bleed. This area is cut off during the manufacturing.

Open TrimBox:

341 × 240 mm

Margins: min. 5 mm

It is recommended that no important texts or images are placed outside the inner margins set inside the TrimBox as well as out of the folding lines due to manufacturing tolerances.

- Folding edge (non-visible)
- - - Grooving
- Final open format

Make sure to remove the layout template from your print file!

137 mm

8

21 mm

8

137 mm

15 mm

240 mm (BleedBox)

210 mm (TrimBox)